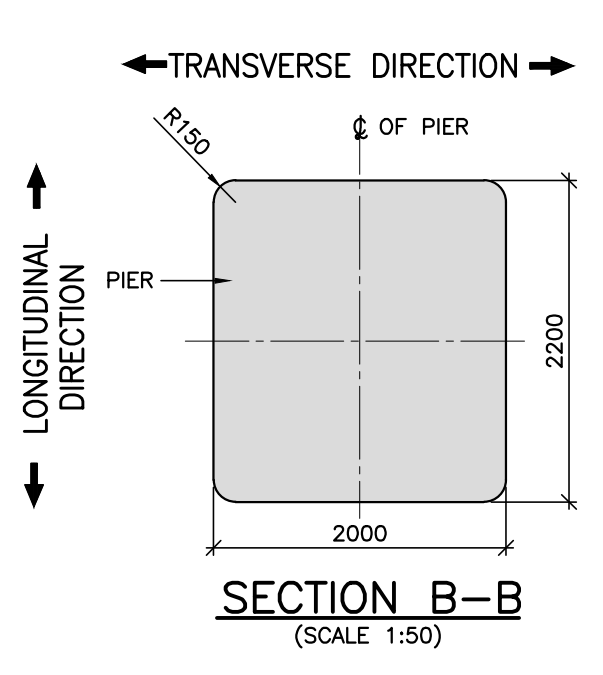
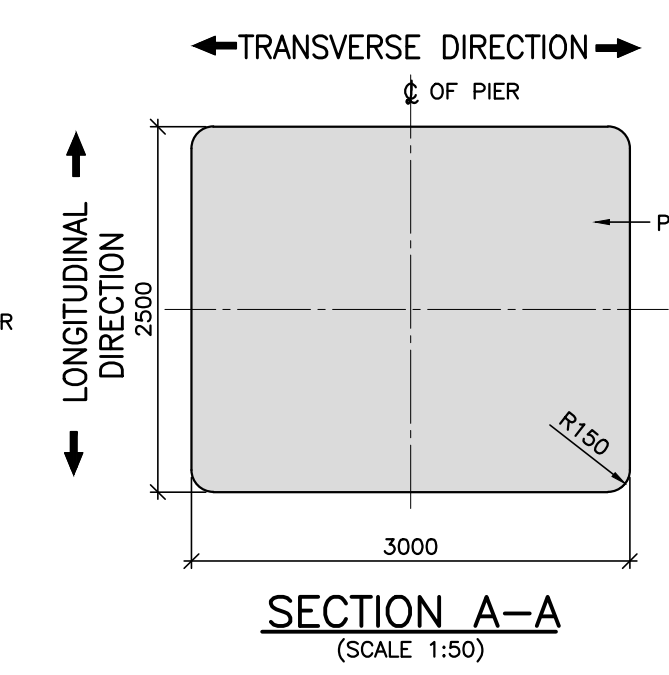
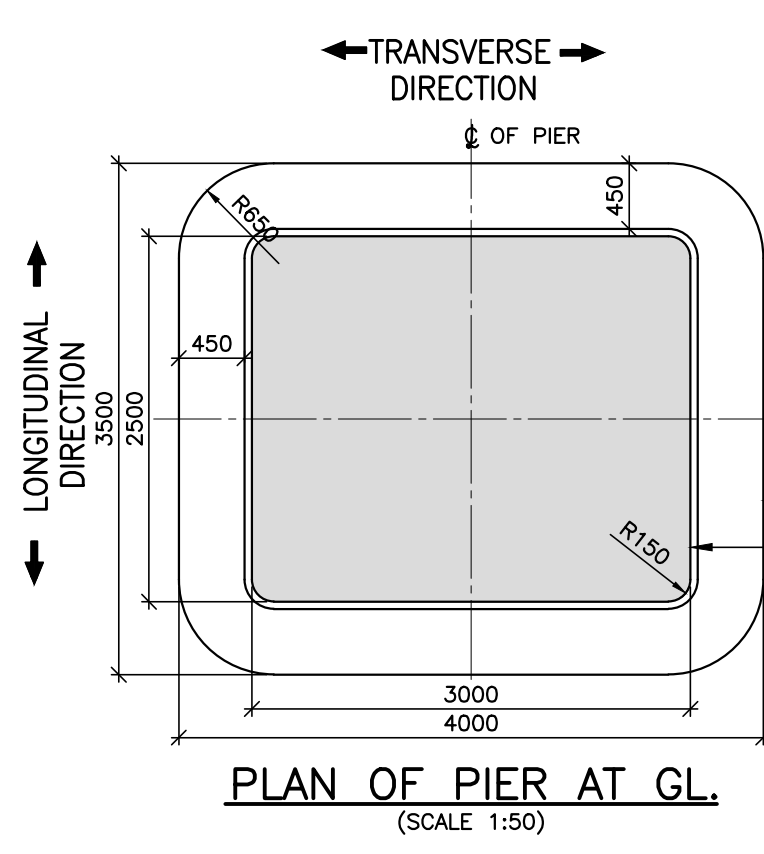
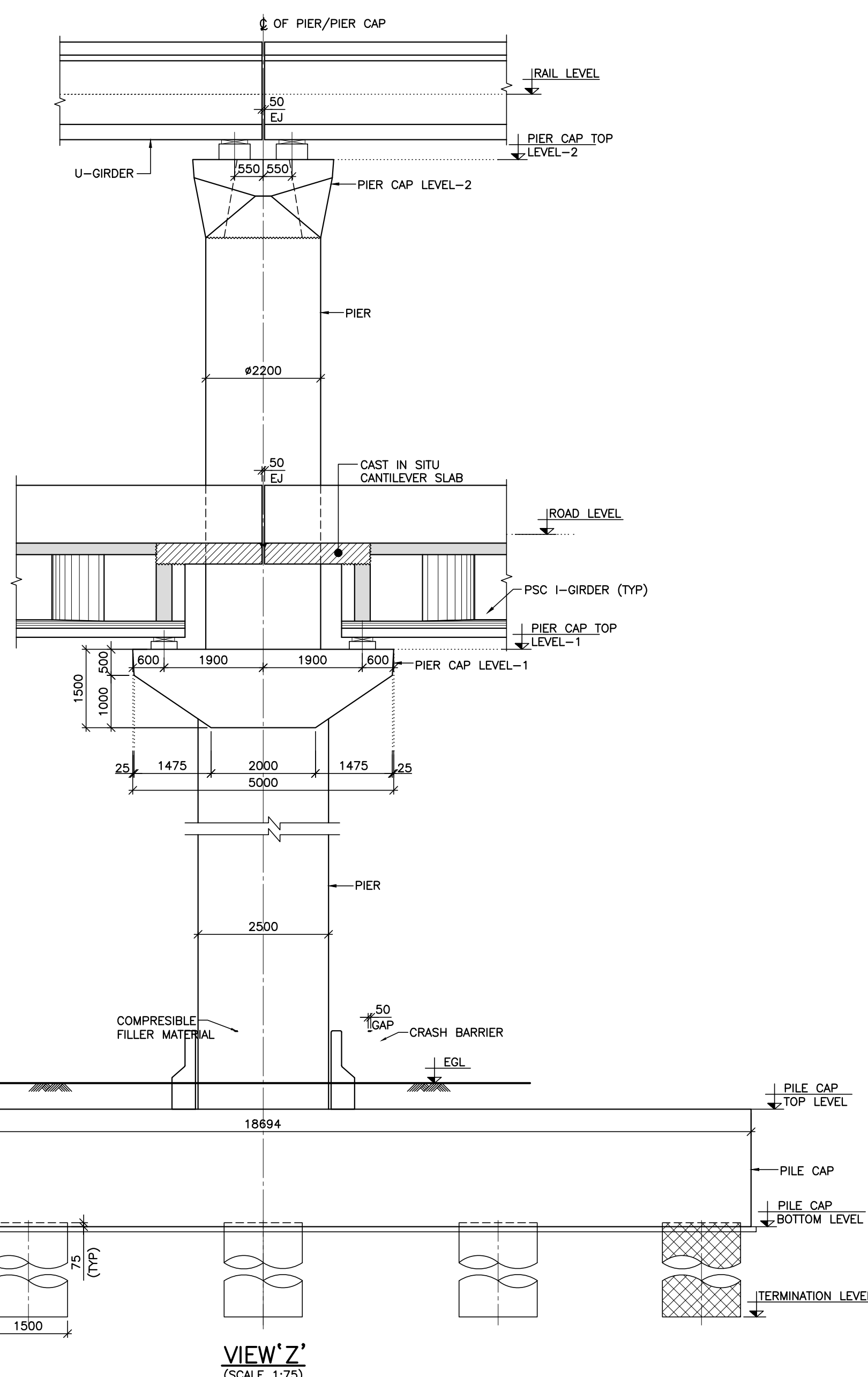


KEY PLAN  
(SCALE-1:500)

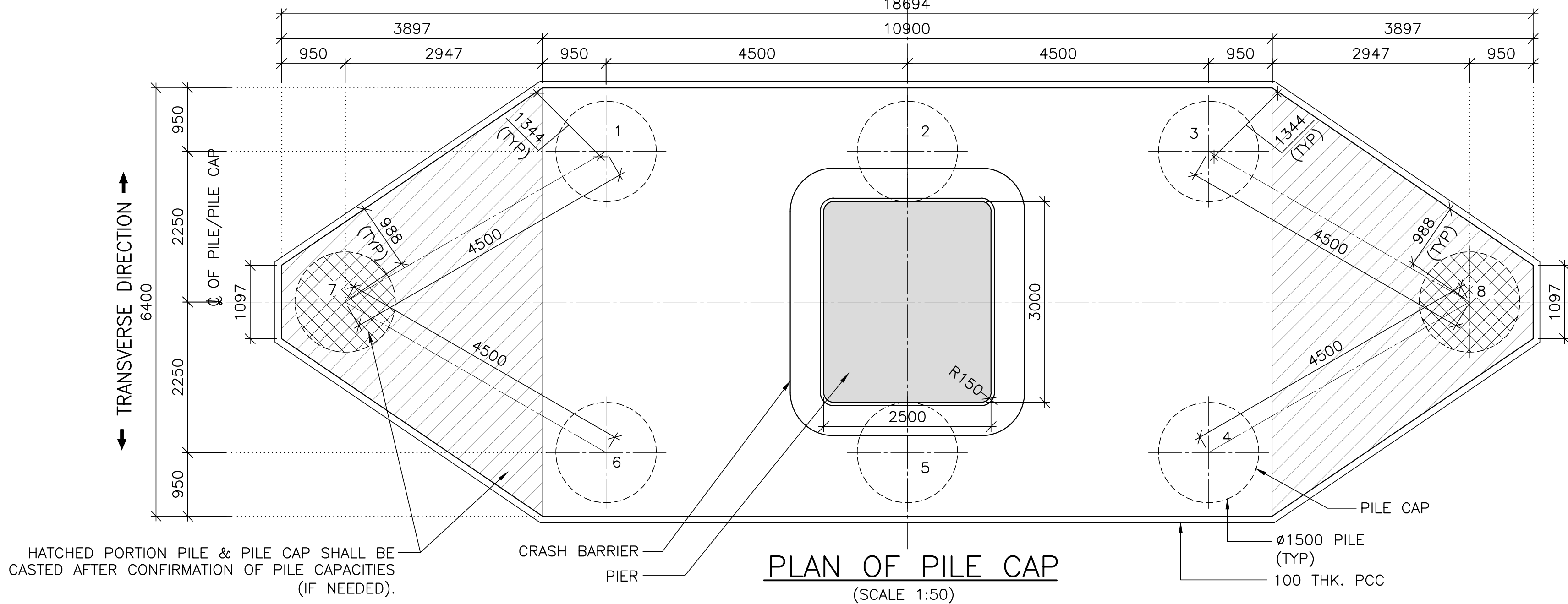


- # NOTES:
1. ALL DIMENSIONS ARE IN MILLIMETERS AND LEVELS ARE IN METER, UNLESS OTHERWISE SPECIFIED.
  2. DIMENSIONS ARE NOT TO BE SCALED. ONLY WRITTEN DIMENSIONS SHALL BE FOLLOWED. THIS DRAWING SHOULD BE READ IN CONJUNCTION WITH GENERAL ARRANGEMENT SPECIFICATIONS AND ALIGNMENT DRAWINGS.
  3. IF ANY AMBIGUITY IS FOUND IN DRAWINGS OR AT SITE, THE SAME SHALL BE BROUGHT TO DESIGNER'S/ ENGINEER'S NOTICE BEFORE EXECUTION.
  4. REINFORCEMENT STEEL SHALL BE HYSD BARS OF GRADE Fe 500 CONFORMING TO IS-1786-2008
  5. GRADE OF CONCRETE SHALL BE AS FOLLOWS:  
LEVELING COURSE : PCC M20  
PILE : RCC M35  
PILE CAP : RCC M35  
PIER : RCC M50
  6. CLEAR COVER TO ALL REINFORCEMENT SHALL BE:  
PILE : 75 mm  
PILE CAP : 75 mm  
PIER : 50 mm
  7. SEISMIC ZONE: II
  8. BORING AND CONCRETING OF PILE SHALL BE CARRIED OUT AS PER TECHNICAL SPECIFICATIONS AND METHOD STATEMENT.
  9. PILE COORDINATES SHOULD BE CHECKED AND CONFIRMED AT SITE BEFORE CASTING OF PILES.
  10. THE NOMINAL MAXIMUM SIZE OF AGGREGATE TO BE USED SHALL BE 20mm.
  11. THE TOP SHOULD PROJECT 75mm INTO PILECAP.
  12. CONTRACTOR TO ENSURE THAT AT CUT-OFF LEVEL THE CONCRETE IS SOUND AND THE MATRIX HAS NO HONEYCOMBING OR OTHER DEFECTS.
  13. THE METHOD OF BORING AND INSTALLATION FOR WORKING PILE SHALL BE SAME AS PER THE TEST PILE.
  14. PERMISSIBLE TOLERANCES FOR PILE SHALL BE:-  
a) SHIFT NOT TO EXCEED 75 mm AT PILING PLATFORM LEVEL.  
b) TILT NOT TO EXCEED 1 IN 150.
  15. IN CASE OF ANY DEVIATION IS OBSERVED DURING THE PILE BORING OPERATION, THE SAME SHOULD BE BROUGHT TO THE NOTICE OF DESIGNER AND ENGINEER FOR IMMEDIATE ACTION/ AMENDMENTS BEFORE EXECUTION.
  16. TEMPORARY LINER SHALL BE FOLLOWED AT SITE, HOWEVER IF ANY DIFFICULTY ARISES IN EXECUTION, PERMANENT LINER SHALL BE PROVIDED AS PER ENGINEER'S RECOMMENDATION.
  17. DESIGN OF FOUNDATION IS CARRIED OUT CONSIDERING BORE LOG IN THE DRAWING. IN CASE OF ANY VARIATION IN THE STRATUM MATERIAL SHALL BE REFERRED TO THE DESIGNER.
  18. ANY SHIFTING IN PILE AT SITE, SHALL BE BROUGHT TO THE NOTICE OF DDC.
  19. LEVELS CONSIDERED IN DESIGN ARE AS PER GENERAL ARRANGEMENT DRAWING. IF THERE IS ANY VARIATION IN TERMS OF THE LEVELS, MATERIAL SHALL BE REFERRED TO THE DESIGNER.
  20. BEARING TYPE USED FOR LEVEL 1 AND LEVEL 2 SUPERSTRUCTURE IS ELASTOMERIC TYPE BEARING.
  21. HIGHWAY LOADING CONSIDERED FOR DESIGN OF LEVEL 1 SUPERSTRUCTURE IS CLASS A TYPE VEHICLE AS PER IRC6:2017.

NOTES :						LEGEND :		REFERENCE DRAWINGS :				REFERENCE DOCUMENTS :		KEY PLAN		STATION BOX KEY PLAN		EMPLOYER :		
						☒ — BEARING		1. 022077-BSRP-CR2-C1-V0-GEN-10-2007 TO 2014....GENERAL ARRANGEMENT DRAWING FOR VADQUT PORTION FOR CH. 13+500 km TO CH. 16+900 km 2. 022077-BSRP-CR2-C-V0-GEN-20-4506....REINFORCEMENT DETAILS OF PILE, PILE CAP & PIER FOR DOUBLE DECKER PIER P126 TO P130 & P139 TO P152				DOC-BSRP-CR2-V0-DGN-GEN-20-4505 (REV-B)						DESIGNATION    NAME    SIGN          		
REVISIONS						CONTRACTOR :		QUALITY ASSURANCE				GENERAL CONSULTANTS				EMPLOYER :		PROJECT :		
						TRANSPORTATION INFRASTRUCTURE IC EDRC-SPECIAL BRIDGES		The responsibility of control, check and verification of accuracy, correctness, completeness, integration and full compliance of Contract provisions in respect of design analysis and drawing rests with Design & Build Contractor.				<div style="display: flex;"> <div style="flex: 1;">CHECKED</div> <div style="flex: 1;">NAME</div> <div style="flex: 1;">SIGN</div> </div>				 RAIL INFRASTRUCTURE DEVELOPMENT COMPANY (KARNATAKA) LIMITED		PROJECT : BENGALURU SUBURBAN RAILWAY PROJECT (BSRP) K-RIDE CORRIDOR - 2		
						DETAILED DESIGN CONSULTANT (DDC) :		DDC				SIGN						DRAWING TITLE :		
						PROOF CONSULTANT (PC) :		PC				NAME						DIMENSION DETAILS OF FOUNDATION AND SUBSTRUCTURE FOR DOUBLE DECKER PIER AT P126 TO P130 & P139 TO P152 (GROUP-20)		
						 CS CONSULTANTS PVT. LTD. 218, 4th floor, Maruthi Nagar, Bangalore-560024 Email: csdesign@csconsultants.com www.csconsultants.com		DATE				DATE						DRAWING NO. :		
						 Indian Institute of Technology Madras IIT P. O., Chennai 600 036 INDIA		NAME				NAME						022077-BSRP-CR2-CVD-GEN-20-4505 SHEET-I OF 3		
						 AECOM		PREPARED BY				ISSUED BY						SCALE : AS SHOWN DATE : 27.05.2024		
B 27.05.24 AS PER CRS								DATE				DATE						REVISION B D		
A 27.02.24 FOR APPROVAL								NAME				NAME						DWG STATUS		
REV DATE BRIEF DESCRIPTION								APPROVED BY				APPROVED BY						PRELIMINARY DWG (P), DEFINITIVE DWG (D), CONSTRUCTION DWG (C), AS BUILT DWG (B), SHOP DWG (S), MANUFACTURED DWG (M), SHEET SIZE - A1		



← LONGITUDINAL DIRECTION →  
⊙ OF PILE/PILE CAP



**NOTE:**  
1. PILES 1 TO 6 TO BE CASTED FIRST.  
2. PILES 7 & 8 TO BE CASTED AFTER CONFIRMATION OF PILE CAPACITIES (IF NEEDED).

**CONSTRUCTION SEQUENCE:**  
1. THE PIER IS CASTED UP TO PRE-CAST PIER CAP LEVEL-1 (IRC).  
2. THE PRE-CAST PIER CAP FOR LEVEL-1 (IRC) IS BROUGHT IN TO POSITION AND ERECTED.  
3. THE PIER UP TO THE BOTTOM OF LEVEL-2 PIER CAP (IRS) IS CASTED AND DOWELS ARE LEFT FOR ITS PIER CAP.  
4. THE PRE CAST PIER CAP LEVEL-2 (IRS) IS BROUGHT INTO POSITION AND ERECTED.  
5. I-GIRDERS CORRESPONDING TO LEVEL-1 (IRC), ARE BROUGHT INTO THE POSITION BY LAUNCHING GIRDER FROM THE TOP OF THE LEVEL-2 PIER AND PLACED IN POSITION.  
6. SUBSEQUENTLY, U-GIRDERS CORRESPONDING TO LEVEL-2 (IRS) ARE PLACED IN THE POSITION ON LEVEL-2 PIER CAP BY THE LAUNCHING GIRDER.

TABLE OF LEVELS

PIER LOCATION	PROPOSED BSRP RAIL LEVEL (m)	PROPOSED HIGHWAY LEVEL (m)	**PIER CAP TOP AT LEVEL 2 (m)	PIER CAP TOP AT LEVEL 1 (m)	EXISTING GROUND LEVEL (m)	PILE CAP TOP LEVEL (m)	PILE CUT-OFF LEVEL (m)	PILE CAP BOTTOM LEVEL (m)	PILE TERMINATION LEVEL (m)	APPLICABLE BOREHOLE	WORKING LOAD VERTICAL (kN)	WORKING LOAD HORIZONTAL (kN)	PILE CAPACITY VERTICAL (kN)	PILE CAPACITY HORIZONTAL (kN)
P126	920.776	912.345	919.596	909.935	901.167	900.667	898.492	898.417	865.417	BH-75	5897	126	7240	2264
P127	920.649	912.218	919.469	909.808	901.375	900.875	898.700	898.625	865.625	BH-76	5897	126	8136	1893
P128	920.523	912.092	919.343	909.682	901.308	900.808	898.633	898.558	865.558	BH-76	5897	126	8136	1893
P129	920.396	911.965	919.216	909.555	901.400	900.900	898.725	898.650	865.650	BH-76	5897	126	8136	1893
P130	920.274	911.844	919.094	909.434	901.485	900.985	898.810	898.735	865.735	BH-77	5897	126	7068	1768
P139*	921.564	913.133	920.384	910.723	901.688	901.188	899.013	898.938	865.938	BH-77	5897	126	7068	1768
P140*	921.689	913.258	920.509	910.848	901.913	901.413	899.238	899.163	866.163	BH-77	5897	126	7068	1768
P141*	921.814	913.383	920.634	910.973	902.118	901.618	899.443	899.368	866.368	BH-77	5897	126	7068	1768
P142*	921.939	913.508	920.759	911.098	902.308	901.808	899.633	899.558	866.558	BH-77	5897	126	7068	1768
P143*	922.064	913.633	920.884	911.223	902.493	901.993	899.818	899.743	866.743	BH-77	5897	126	7068	1768
P144*	922.189	913.758	921.009	911.348	902.678	902.178	900.003	899.928	866.928	BH-77	5897	126	7068	1768
P145*	922.314	913.883	921.134	911.473	902.767	902.267	900.092	900.017	867.017	BH-77	5897	126	7068	1768
P146*	922.505	914.008	921.325	911.598	903.014	902.514	900.339	900.264	867.264	BH-77	5897	126	7068	1768
P147*	922.982	914.133	921.802	911.723	903.255	902.755	900.580	900.505	867.505	BH-77	5897	126	7068	1768
P148*	923.593	914.258	922.413	911.848	903.352	902.852	900.677	900.602	867.602	BH-77	5897	126	7068	1768
P149*	924.204	914.383	923.024	911.973	903.743	903.243	901.068	900.993	867.993	BH-77	5897	126	7068	1768
P150*	924.815	914.508	923.635	912.098	903.852	903.352	901.177	901.102	868.102	BH-77	5897	126	7068	1768
P151*	925.426	914.633	924.246	912.223	903.861	903.361	901.186	901.111	868.111	BH-77	5897	126	7068	1768
P152*	926.038	914.759	924.858	912.349	903.961	903.461	901.286	901.211	868.211	BH-77	5897	126	7068	1768

\*GIR & GTI not available. Critical Borehole assumed for design purposes.

\*\*PIER CAP TOP LEVEL IS SUBJECT TO THE FINALIZATION OF RAIL PLINTH DIMENSIONS

P126-PIER & PILE CO-ORDINATES

CENTRE LOCATIONS	EASTING	NORTHING
PIER	777706.655	1442870.030
PILE 1	777711.057	1442872.466
PILE 2	777708.510	1442868.756
PILE 3	777705.962	1442865.047
PILE 4	777702.253	1442867.595
PILE 5	777704.800	1442871.304
PILE 6	777707.348	1442875.013
PILE 7	777711.427	1442876.978
PILE 8	777701.918	1442863.134

P127-PIER & PILE CO-ORDINATES

CENTRE LOCATIONS	EASTING	NORTHING
PIER	777694.660	1442851.590
PILE 1	777698.935	1442854.244
PILE 2	777696.577	1442850.411
PILE 3	777694.218	1442846.579
PILE 4	777690.386	1442848.937
PILE 5	777692.744	1442852.770
PILE 6	777695.102	1442856.602
PILE 7	777699.077	1442858.769
PILE 8	777690.276	1442844.465

P128-PIER & PILE CO-ORDINATES

CENTRE LOCATIONS	EASTING	NORTHING
PIER	777683.600	1442832.575
PILE 1	777687.744	1442835.428
PILE 2	777685.570	1442831.488
PILE 3	777683.396	1442827.548
PILE 4	777679.456	1442829.722
PILE 5	777681.630	1442833.662
PILE 6	777683.804	1442837.602
PILE 7	777687.672	1442839.955
PILE 8	777679.558	1442825.251

P129-PIER & PILE CO-ORDINATES

CENTRE LOCATIONS	EASTING	NORTHING
PIER	777673.293	1442813.140
PILE 1	777677.352	1442816.112
PILE 2	777675.293	1442812.111
PILE 3	777673.234	1442808.109
PILE 4	777669.233	1442810.168
PILE 5	777671.292	1442814.170
PILE 6	777673.351	1442818.171
PILE 7	777677.149	1442820.635
PILE 8	777669.465	1442805.701

P130-PIER & PILE CO-ORDINATES

CENTRE LOCATIONS	EASTING	NORTHING
PIER	777663.330	1442793.525
PILE 1	777667.368	1442796.526
PILE 2	777665.338	1442792.510
PILE 3	777663.307	1442788.494
PILE 4	777659.291	1442790.525
PILE 5	777661.322	1442794.541
PILE 6	777663.352	1442798.557
PILE 7	777667.133	1442801.047
PILE 8	777659.555	1442786.060

P139-PIER & PILE CO-ORDINATES

CENTRE LOCATIONS	EASTING	NORTHING
PIER	777552.381	1442580.931
PILE 1	777556.695	1442583.519
PILE 2	777554.279	1442579.723
PILE 3	777551.863	1442575.926
PILE 4	777548.067	1442578.342
PILE 5	777550.483	1442582.139
PILE 6	777552.898	1442585.935
PILE 7	777556.906	1442588.042
PILE 8	777547.890	1442573.873

P140-PIER & PILE CO-ORDINATES

CENTRE LOCATIONS	EASTING	NORTHING
PIER	777540.109	1442562.674
PILE 1	777544.549	1442565.042
PILE 2	777541.944	1442561.372
PILE 3	777539.339	1442557.702
PILE 4	777535.670	1442560.307
PILE 5	777538.274	1442563.977
PILE 6	777540.879	1442567.646
PILE 7	777544.988	1442569.547
PILE 8	777535.267	1442555.852

P141-PIER & PILE CO-ORDINATES

CENTRE LOCATIONS	EASTING	NORTHING
PIER	777527.036	1442544.981
PILE 1	777531.554	1442547.196
PILE 2	777528.826	1442543.617
PILE 3	777526.098	1442540.038
PILE 4	777522.519	1442542.766
PILE 5	777525.247	1442546.345
PILE 6	777527.975	1442549.924
PILE 7	777532.145	1442551.684
PILE 8	777521.965	1442538.327

P142-PIER & PILE CO-ORDINATES

CENTRE LOCATIONS	EASTING	NORTHING
PIER	777513.602	1442527.559
PILE 1	777518.136	1442529.740
PILE 2	777515.381	1442526.182
PILE 3	777512.627	1442522.623
PILE 4	777509.068	1442525.378
PILE 5	777511.823	1442528.936
PILE 6	777514.577	1442532.495
PILE 7	777518.761	1442534.224
PILE 8	777508.481	1442520.944

P152-PIER & PILE CO-ORDINATES

CENTRE LOCATIONS	EASTING	NORTHING
PIER	777360.816	1442370.347
PILE 1	777365.761	1442371.273
PILE 2	777362.176	1442368.554
PILE 3	777358.591	1442365.835
PILE 4	777355.871	1442369.420
PILE 5	777359.457	1442372.139
PILE 6	777363.042	1442374.859
PILE 7	777367.532	1442375.440
PILE 8	777354.151	1442365.291

P143-PIER & PILE CO-ORDINATES

CENTRE LOCATIONS	EASTING	NORTHING
PIER	777500.135	1442510.162
PILE 1	777504.669	1442512.344
PILE 2	777501.914	1442508.785
PILE 3	777499.160	1442505.227
PILE 4	777495.601	1442507.981
PILE 5	777498.356	1442511.540
PILE 6	777501.111	1442515.098
PILE 7	777505.294	1442516.827
PILE 8	777495.014	1442503.547

P144-PIER & PILE CO-ORDINATES

CENTRE LOCATIONS	EASTING	NORTHING
PIER	777486.654	1442492.777
PILE 1	777491.198	1442494.938
PILE 2	777488.427	1442491.392
PILE 3	777485.657	1442487.845
PILE 4	777482.111	1442490.616
PILE 5	777484.881	1442494.162
PILE 6	777487.651	1442497.708
PILE 7	777491.843	1442499.419
PILE 8	777481.504	1442486.184

P145-PIER & PILE CO-ORDINATES

CENTRE LOCATIONS	EASTING	NORTHING
PIER	777472.899	1442475.608
PILE 1	777477.504	1442477.635
PILE 2	777474.631	1442474.172
PILE 3	777471.758	1442470.708
PILE 4	777468.295	1442473.581
PILE 5	777471.167	1442477.044
PILE 6	777474.040	1442480.508
PILE 7	777478.280	1442482.095
PILE 8	777467.559	1442469.169

P146-PIER & PILE CO-ORDINATES

CENTRE LOCATIONS	EASTING	NORTHING
PIER	777458.449	1442459.022
PILE 1	777463.148	1442460.820
PILE 2	777460.108	1442457.502
PILE 3	777457.068	1442454.184
PILE 4	777453.750	1442457.225
PILE 5	777456.790	1442460.542
PILE 6	777459.830	1442463.860
PILE 7	777464.143	1442465.236
PILE 8	777452.797	1442452.854

P147-PIER & PILE CO-ORDINATES

CENTRE LOCATIONS	EASTING	NORTHING
PIER	777443.184	1442443.183
PILE 1	777447.968	1442444.742
PILE 2	777444.765	1442441.581
PILE 3	777441.562	1442438.420
PILE 4	777438.401	1442441.624
PILE 5	777441.604	1442444.784
PILE 6	777444.807	1442447.945
PILE 7	777448.184	1442449.103
PILE 8	777437.230	1442437.307

P148-PIER & PILE CO-ORDINATES

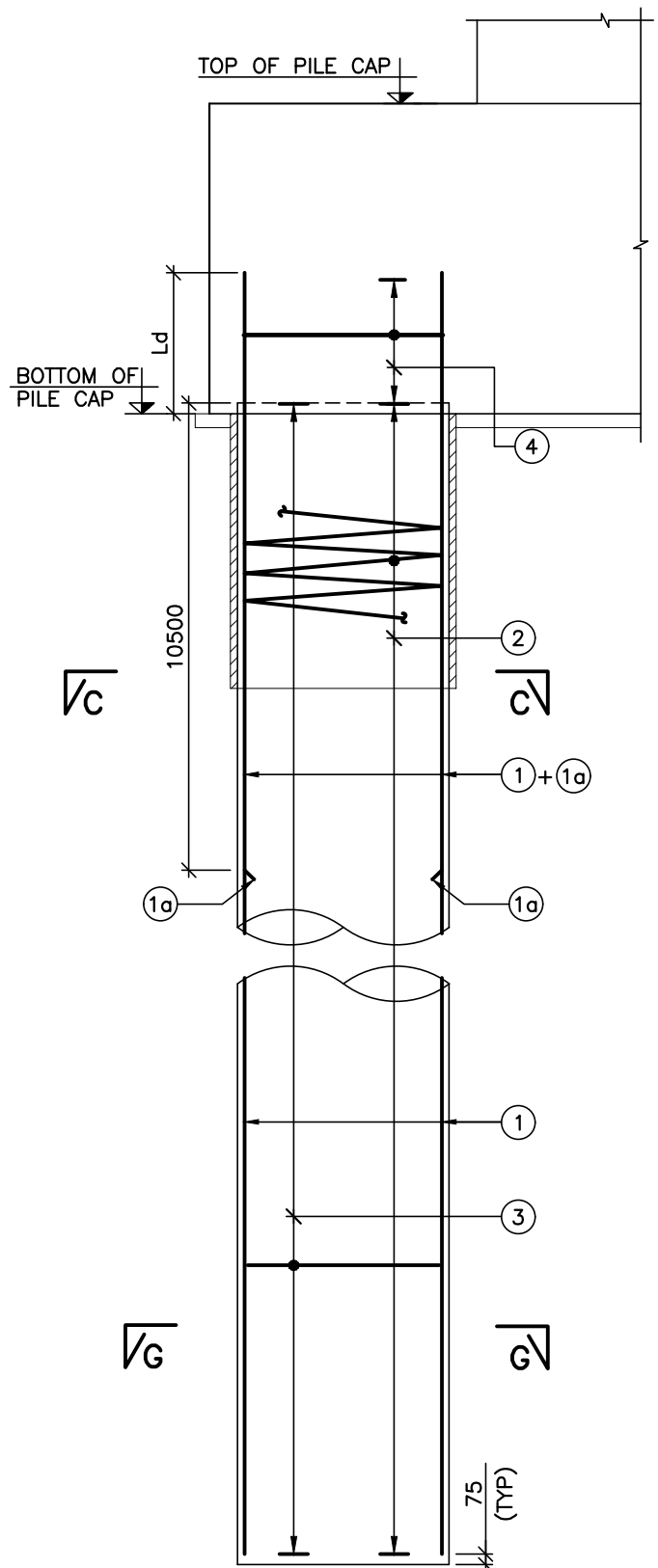
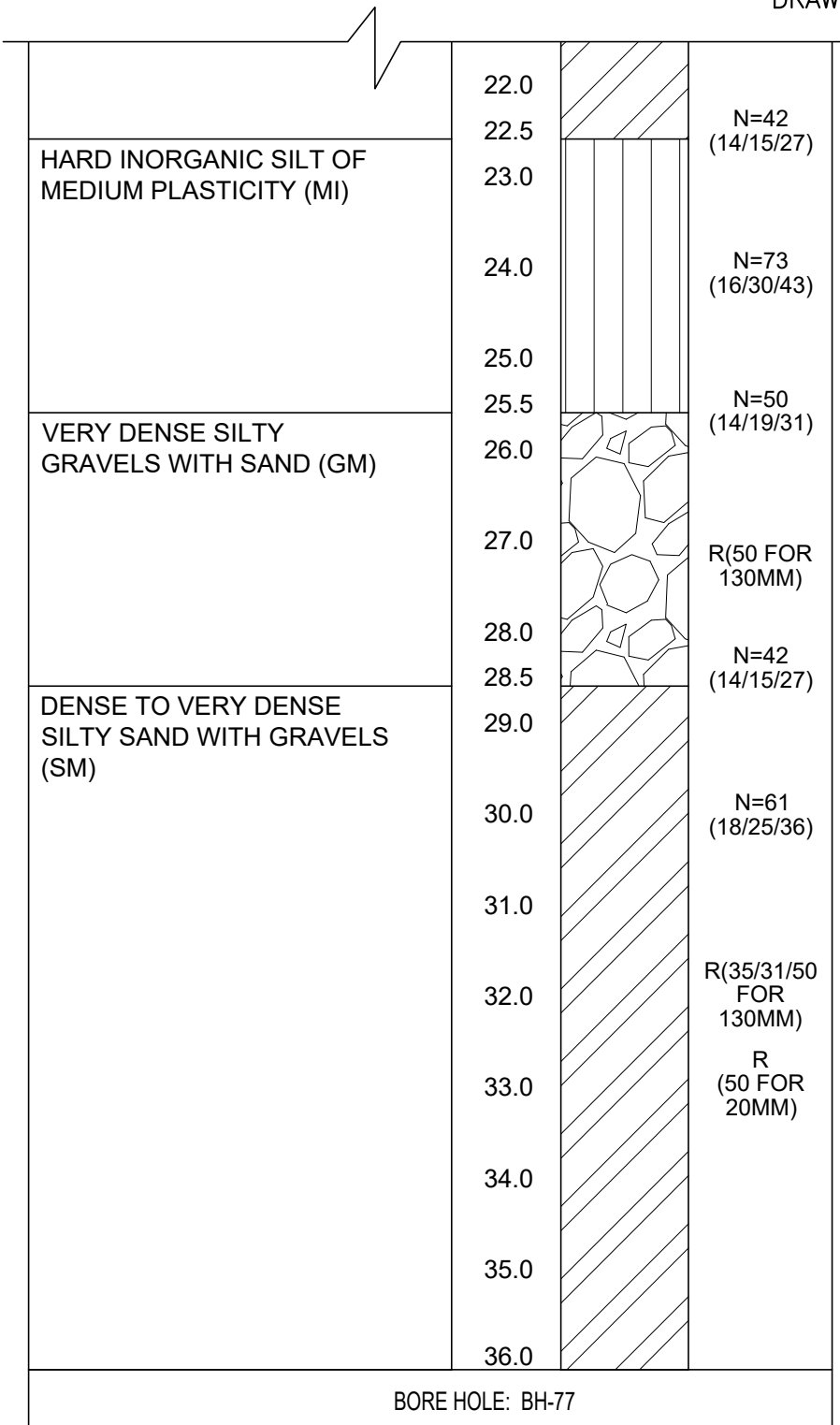
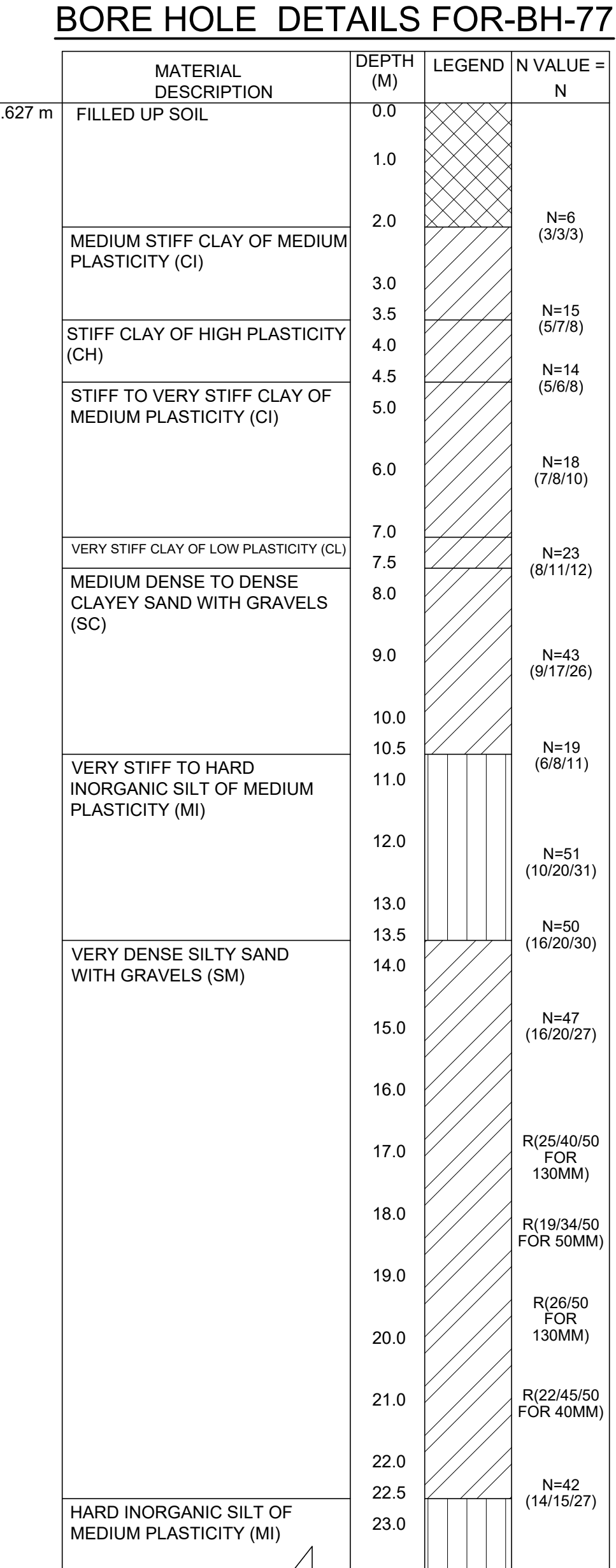
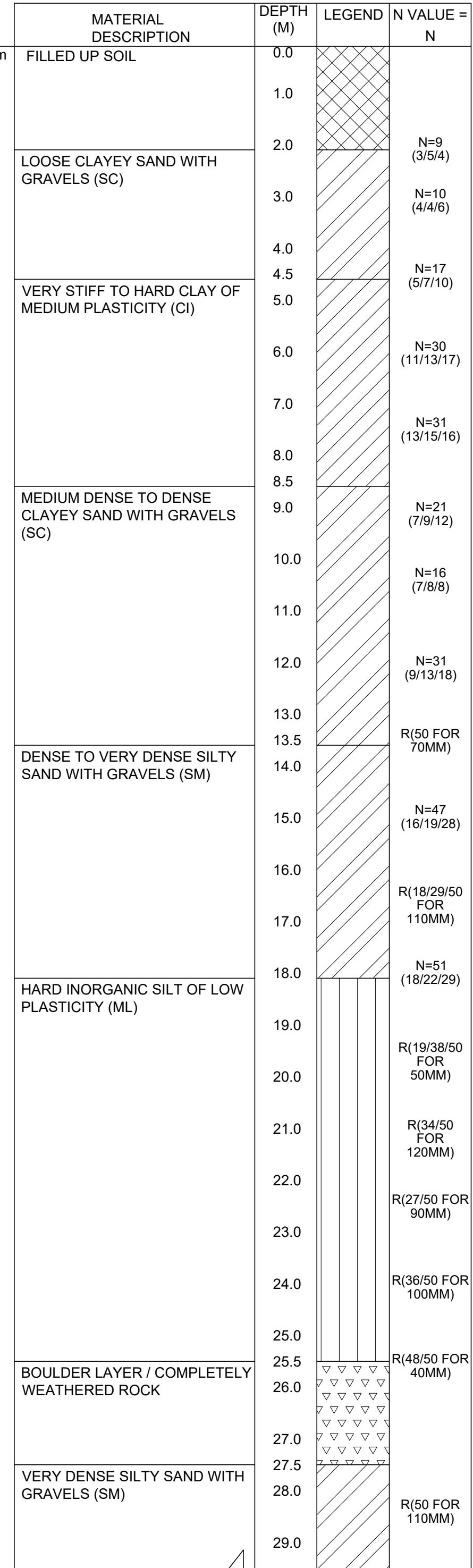
CENTRE LOCATIONS	EASTING	NORTHING
PIER	777427.211	1442428.057
PILE 1	777432.048	1442429.439
PILE 2	777428.731	1442426.398
PILE 3	777425.414	1442423.357
PILE 4	777422.373	1442426.675
PILE 5	777425.690	1442429.715
PILE 6	777429.007	1442432.756
PILE 7	777433.424	1442433.752
PILE 8	777421.044	1442422.404

P149-PIER & PILE CO-ORDINATES

CENTRE LOCATIONS	EASTING	NORTHING
PIER	777410.896	1442413.298
PILE 1	777415.746	1442414.636
PILE 2	777412.402	1442411.625
PILE 3	777409.057	1442408.615
PILE 4	777406.046	1442411.960
PILE 5	777409.391	

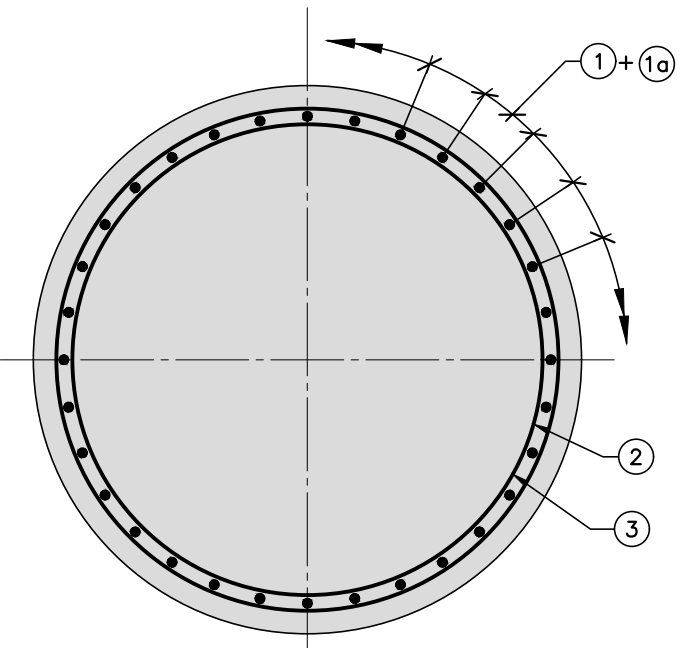


## BORE HOLE DETAILS FOR-BH-76

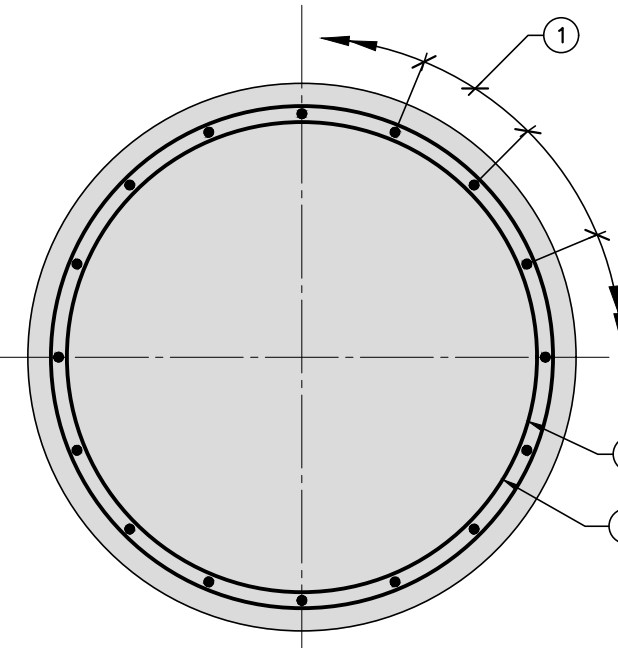


## PILE REINFORCEMENT

(SCALE 1:50)






LAPPING DETAIL  
(SCALE 1:10)



SECTION C-C  
(SCALE 1:20)

SECTION G-G  
(SCALE 1:20)

SCHEDULE OF REINFORCEMENT FOR PILE

ITEM	BAR MARK	BAR DIA.	SHAPE	TOTAL NOS./ SPACINGS	REMARKS
PILE	①	Φ25		16 NOS	VERTICAL BAR ALTERNATE WITH (10)
	⑩	Φ25		16 NOS	VERTICAL BAR ALTERNATE WITH (1)
	②	Φ10		150 PITCH HELICAL REINFORCEMENT	
	③	Φ10		Ø 1500 c/c	RING
	④	Φ10		Ø 1500 c/c	RING

NOTES :		NOTES :		LEGEND :		REFERENCE DRAWINGS :		REFERENCE DOCUMENTS :		KEY PLAN		STATION BOX KEY PLAN		EMPLOYER :																			
				☒ — BEARING		1. 022077-BSRP-CR2-C1-VD-GEN-10-2007 TO 2014..GENERAL ARRANGEMENT DRAWING FOR VIADUCT PORTION FOR CH. 13+500 Km TO CH. 16+900 Km 2. 022077-BSRP-CR2-C-V0-GEN-20-4506..REINFORCEMENT DETAILS OF PILE, PILE CAP & PIER FOR DOUBLE DECKER PIER P126 TO P130 & P139 TO P152		DDC-BSRP-CR2-V0-DGN-GEN-20-4505 (REV-B)						<table><tr><th>DESIGNATION</th><th>NAME</th><th>SIGN</th></tr><tr><td> </td><td> </td><td> </td></tr><tr><td> </td><td> </td><td> </td></tr><tr><td> </td><td> </td><td> </td></tr><tr><td> </td><td> </td><td> </td></tr></table>		DESIGNATION	NAME	SIGN															
DESIGNATION	NAME	SIGN																															
REVISIONS		CONTRACTOR :		QUALITY ASSURANCE		GENERAL CONSULTANTS		REVIEWED		PROJECT DIRECTOR		EMPLOYER :		PROJECT :																			
				The responsibility of control, check and verification of accuracy, correctness, completeness, integration and full compliance of Contract provisions in respect of design analysis and drawing rests with Design & Build Contractor		<table><tr><th>CHECKED</th><th>NAME</th><th>SIGN</th></tr><tr><td>CIVIL &amp; STRUCTURAL</td><td> </td><td> </td></tr><tr><td>GEO-TECHNICAL</td><td> </td><td> </td></tr></table>		CHECKED	NAME	SIGN	CIVIL & STRUCTURAL			GEO-TECHNICAL			<table><tr><th>REVIEWED</th><th>DY. PD</th></tr><tr><td> </td><td> </td></tr></table>		REVIEWED	DY. PD					BENGALURU SUBURBAN RAILWAY PROJECT (BSRP) K-RIDE CORRIDOR - 2								
CHECKED	NAME	SIGN																															
CIVIL & STRUCTURAL																																	
GEO-TECHNICAL																																	
REVIEWED	DY. PD																																
		DETAILED DESIGN CONSULTANT (DDC) :		PC CONSULTANT (PC) :		SIGN				GENERAL CONSULTANTS :		DRAWING TITLE :		DIMENSION DETAILS OF FOUNDATION, SUBSTRUCTURE AND PILE REINFORCEMENT FOR DOUBLE DECKER PIER AT P126 TO P130 & P139 TO P152 (GROUP-20)																			
		STUP Consultants Pvt. Ltd. 12/2, 2nd floor, 2nd Main Road, 1st Stage, 4th Cross, 4th Main Road, Bangalore-560002 Email: bangalore@stupconsultants.com www.stupconsultants.com		Indian Institute of Technology Madras IIT P.O., Chennai 600 036 INDIA		<table><tr><th>DDC</th><th>PC</th><th>Contractor</th></tr><tr><td></td><td></td><td></td></tr></table>		DDC	PC	Contractor				<table><tr><th>SIGN</th><th>NAME</th><th>DATE</th></tr><tr><td> </td><td> </td><td> </td></tr></table>		SIGN	NAME	DATE				<table><tr><th>SIGN</th><th>NAME</th><th>DATE</th></tr><tr><td> </td><td> </td><td> </td></tr></table>		SIGN	NAME	DATE				AECOM @ egis wsp   AECOM-EGIS-WSP		DRAWING NO. : O22077-BSRP-CR2-C-VD-GEN-20-4505 SHEET-3 OF 3 REVISION B DWG STATUS D	
DDC	PC	Contractor																															
SIGN	NAME	DATE																															
SIGN	NAME	DATE																															
B 27.05.24 AS PER CRS				DATE 27.05.2024		NAME SK AP PC SKS		DATE				SCALE : AS SHOWN DATE : 27.05.2024		PRELIMINARY DWG (P), DEFINITIVE DWG (D), CONSTRUCTION DWG (C), AS BUILT DWG (B), SHOP DWG (S), MANUFACTURED DWG (M), SHEET SIZE : A1																			
A 27.02.24 FOR APPROVAL				PREPARED BY CHECKED BY APPROVED BY APPROVED BY ISSUED BY																													
REV DATE BRIEF DESCRIPTION																																	